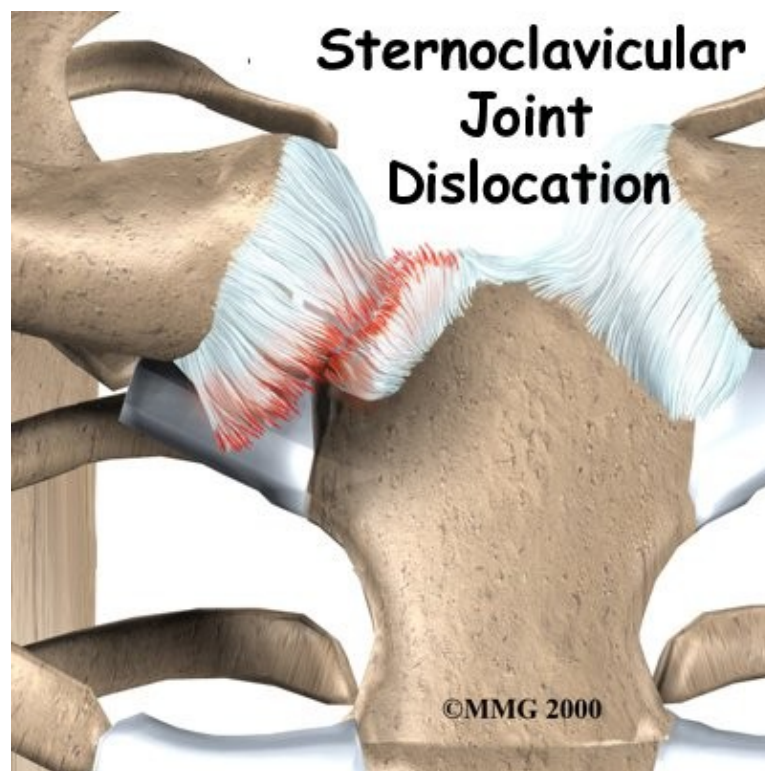


# Sternoclavicular Joint Problems

## Introduction

## Physical Therapy in Branson for Shoulder



**Welcome to Healing Arts Center Physical Therapy's patient resource about Sternoclavicular Joint Problems.**

The sternoclavicular (SC) joint is important because it helps support the shoulder. The SC joint links the bones of the arms and shoulder to the vertical skeleton.

Most SC joint problems are relatively minor. However, certain types of injuries require immediate medical attention.

**This document will help you understand:**

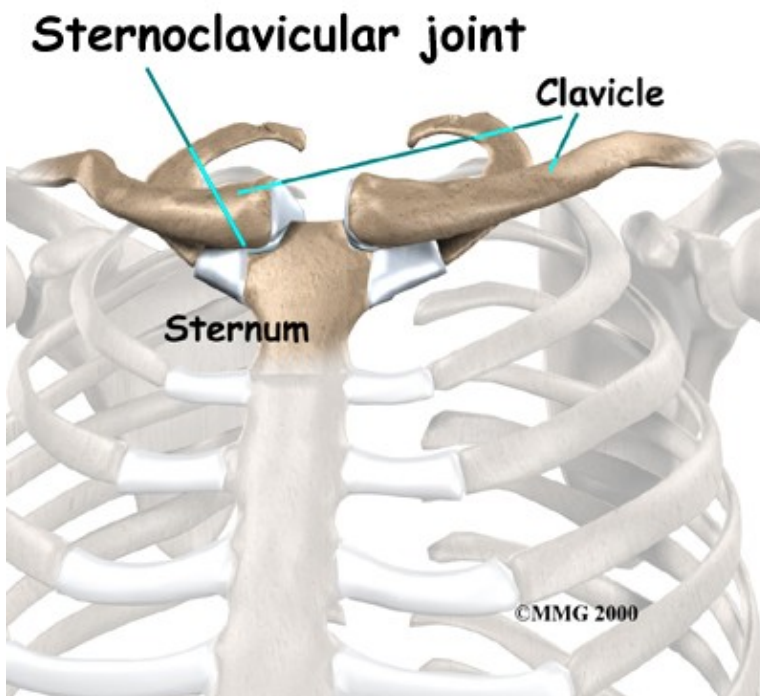
- what the SC joint is
- what kinds of problems can develop at the SC joint
- what treatments are available

## Anatomy

### What does the SC joint look like?

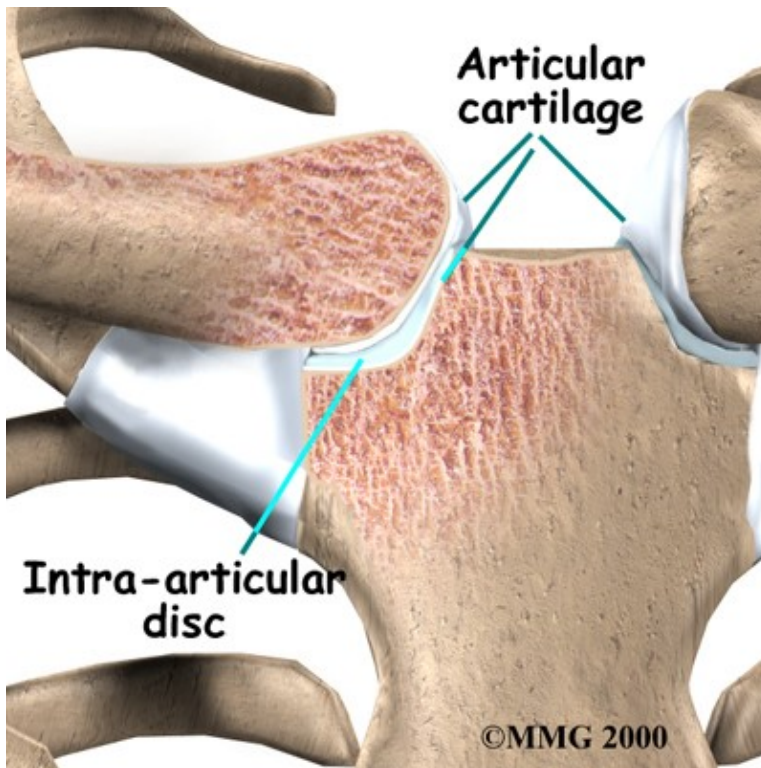
The SC joint connects your *clavicle* (collarbone) to your *sternum*, which is the large bone down the middle of your chest. This attachment is the only bony joint linking the bones of the arm and shoulder to the main part of the skeleton.

## SC Joint

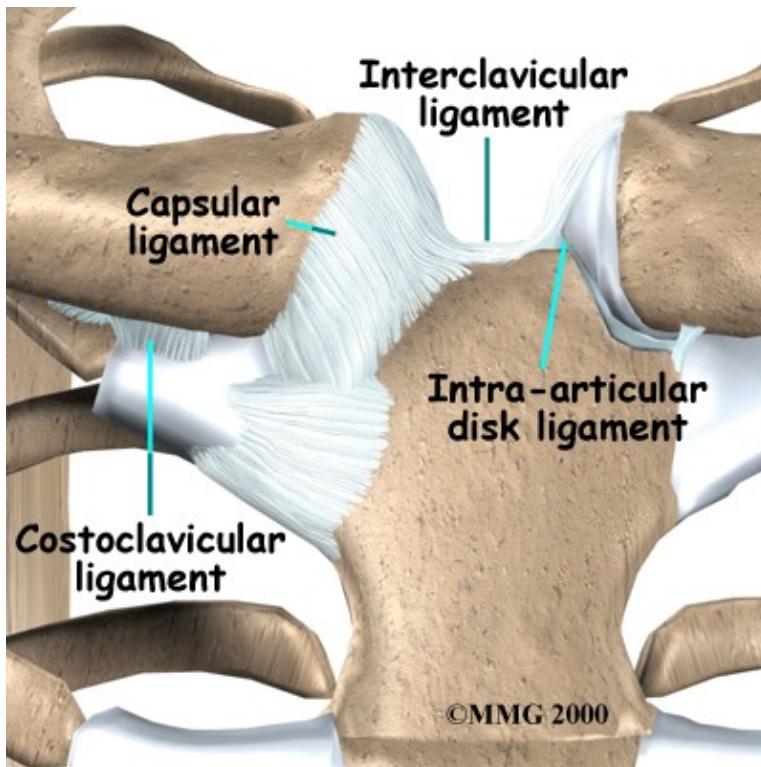


Like most joints, the SC joint is made up of two bones covered with a material called articular cartilage. Articular cartilage is a white, smooth material that covers the ends of bones in a joint. Articular cartilage allows the bones of a joint to rub together without much friction.

## Articular Cartilage



Only a small section of the SC joint actually connects to the sternum. This makes the bony connection somewhat unstable. However, extra *ligaments* cross the SC joint to give it more stability. Ligaments attach bones to other bones.



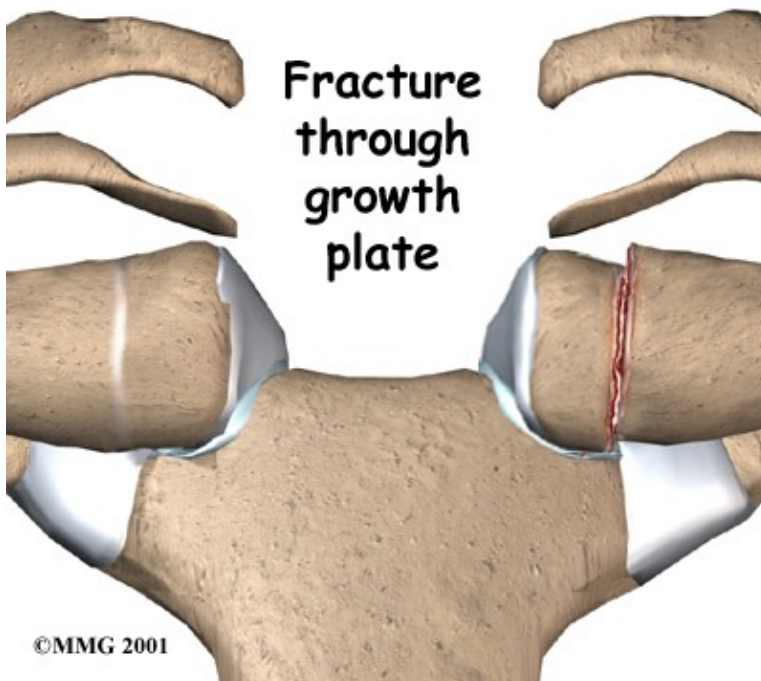
It seems like this construction would make SC joint dislocation common, but a dislocation is actually very rare. The ligaments surrounding the SC joint are extremely strong. These ligaments are very effective at preventing dislocations. Four different types of

ligaments hold the joint in place.

- The *intra-articular disc ligament* attaches to the first rib and divides the joint into two separate spaces. This ligament is very thick and fibrous.
- The *costoclavicular ligament* is short and strong. It attaches underneath the clavicle to the first rib just below. It helps steady the SC joint during certain motions.
- The *interclavicular ligament* supports the ends of both clavicle bones near the SC joint. It passes over the top of the sternum, connecting one clavicle to the other.
- The *capsular ligament* reinforces the capsule that surrounds the SC joint. This ligament keeps the sternum end of the clavicle from pointing up as the other end of the clavicle drops down.

A part of the clavicle called the *physis* does not turn into bone until you are about 25 years old. The physis is a section of cartilage near the end of the clavicle. Bone growth occurs at a physis, which is also called a growth plate. Between age 20 and 25, the cartilage physis fuses into bone. Injuries to the physis in people under 25 may look like an SC joint dislocation. But sometimes the injury is actually a fracture through the growth plate.

## Growth Plate



Related Document: [A Patient's Guide to Shoulder Anatomy](#)

### Shoulder Anatomy Introduction

### Causes

What causes SC joint injuries?



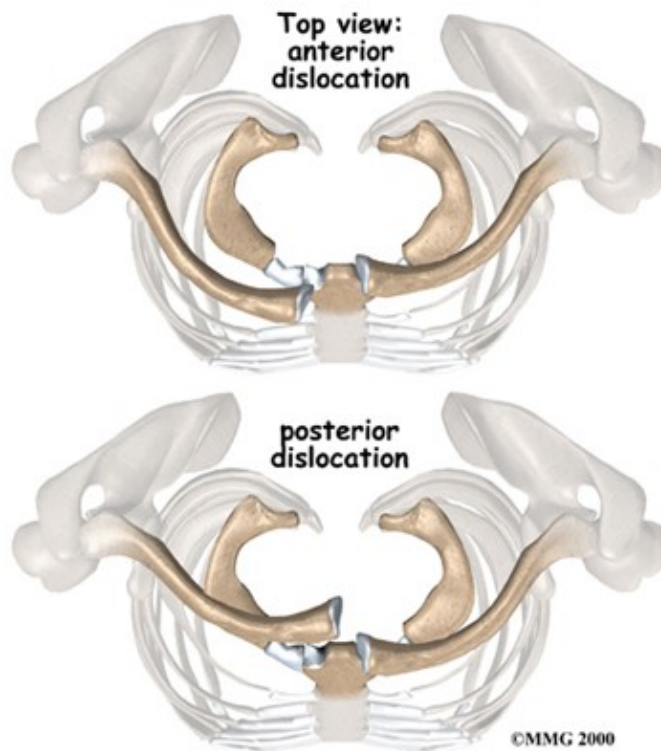
The SC joint is one of the least commonly dislocated joints in the body. Car accidents cause nearly half of all SC dislocations. Sports injuries cause about 20 percent. Falls and other types of accidents cause the rest. These sorts of traumatic injuries can also cause injuries to the physis in people under 25 years old.

Indirect force causes most injuries to the SC joint. Indirect force involves something hitting the shoulder very hard. The shoulder is pushed in and rolled either forward or backward, affecting the SC joint.

When the SC joint is dislocated, it is usually an *anterior dislocation*. This means that the clavicle is pushed forward, in front of the sternum. Dislocating in the opposite direction is less common because the ligaments on the back side of the joint are so strong.

Direct force against the front of the clavicle can push the end of the clavicle behind the sternum, into the area between the lungs. This is called a *posterior dislocation*. It takes a lot of force to cause a posterior dislocation due to the strength of the ligaments behind the joint.

Posterior dislocations can be very dangerous, because the area behind the sternum contains vital organs and tissues. The heart and its large vessels, the trachea, the esophagus, and lymph nodes can all be seriously damaged in a posterior dislocation of the SC joint. This can cause life-threatening injuries to the heart and lungs. Immediate medical help is required to get the SC joint back into position after a posterior dislocation.



## Symptoms

**What does an SC joint injury feel like?**

Different SC joint problems have different symptoms.

### Dislocation

You will know immediately if your SC joint has dislocated. Dislocation causes severe pain that gets worse with any arm movements. In anterior dislocation, the end of the clavicle juts out near the sternum. This causes a hard bump in the middle of the chest. In posterior dislocation, a bump is usually not obvious. The joint will feel different to your doctor. Posterior dislocations can cause difficulty breathing, shortness of breath, or a feeling of choking. Some patients have trouble swallowing or have a tight feeling in their throats.

## **Sprains**

Sometimes force may only sprain the SC joint. Mild sprains cause pain, but the joint is still stable. In moderate sprains, the joint becomes unstable.

## **Ligament Injury**

In rare cases, patients have a stable joint but a painful clicking, grating, or popping feeling. This indicates an injury to the intra-articular disc ligament. This type of injury causes pain and problems moving the SC joint.

## **Degenerative Arthritis**

*Osteoarthritis* is a type of degenerative arthritis that tends to get worse with age. Injury to a joint can result in the development of osteoarthritis. Osteoarthritis eventually causes pain and stiffness. Usually these symptoms go away with anti-inflammatory medications, rest, and heat. If the symptoms last for six to 12 months, some type of surgical treatment may eventually be needed.

## **Diagnosis**

When you visit Healing Arts Center Physical Therapy, diagnosis begins with a complete history and physical examination. Usually our Physical Therapist suspects an injury to the SC joint when there is pain and swelling over the joint. The joint may look deformed.

Some patients may be referred to a doctor for further diagnosis. Once your diagnostic examination is complete, the Physical Therapists at Healing Arts Center Physical Therapy have treatment options that will help speed your recovery, so that you can more quickly return to your active lifestyle.

## **Our Treatment**

### **Non-surgical Rehabilitation**

The treatment our Physical Therapist recommends will depend on the type of injury to your joint.

### ***Sprains***

A mild sprain usually gets better by resting the joint for two to three days. Ice packs can be placed on the sore joint for up to 15 minutes at a time during the first few days after the injury.

Moderate sprains may require some help to get the joint back into position. Your Physical Therapist at Healing Arts Center Physical Therapy may recommend a *figure-eight strap* wraps around both shoulders to support the SC joint. Patients with a moderate sprain may need to wear this type of strap for four to six weeks. The strap protects the joint from another injury and lets the injured ligaments heal and become strong again.

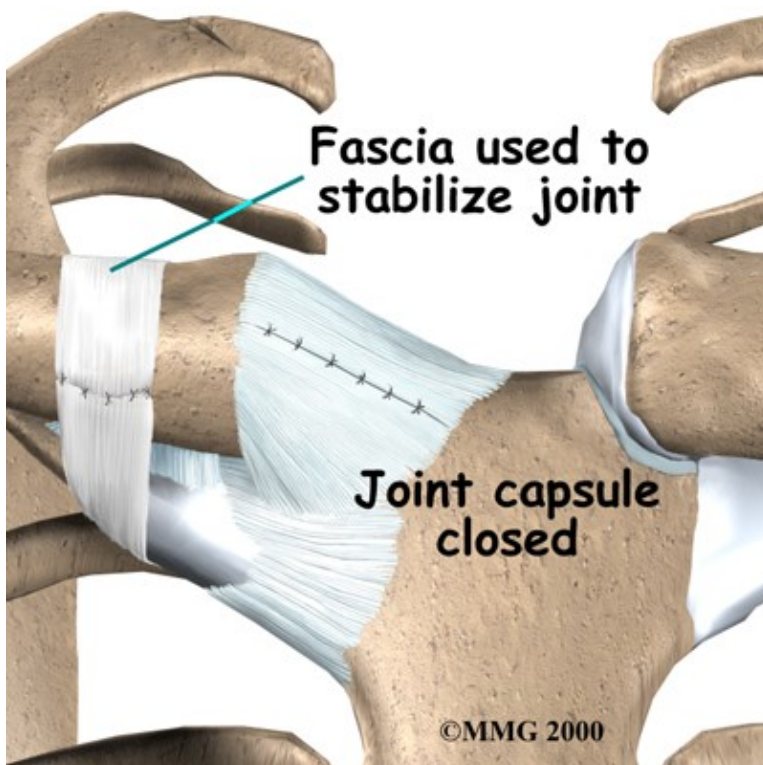
### ***Anterior Dislocation***

After your doctor does a closed reduction for anterior dislocation, your SC joint will need to be held perfectly still. Moving the SC joint will cause pain and may even dislocate the joint again. Your Physical Therapist will probably recommend that you take pain medication and wear a figure-eight strap for at least six weeks.

### ***Posterior Dislocation***

If our Physical Therapist suspects posterior dislocation, you will need to have a complete physical examination right away. You will probably be referred to a doctor for further diagnosis and treatment. We may recommend the use of a figure-eight strap for at least six weeks after closed reduction for a posterior dislocation of the SC joint.

Sometimes closed reduction for a posterior dislocation does not work, or SC joint problems become chronic. In these cases, adult patients may need surgery. The risk of harm to your heart, lungs, and other organs behind the sternum is too high. Posterior dislocation has been known to cause a ruptured esophagus, laceration of major veins, and pressure on major arteries, among other complications. These problems can kill you. Posterior dislocation has also been known to cause hoarseness, a sudden onset of snoring, and voice changes with arm movement.



Most of the time the goal of surgery is to stabilize the SC joint. When the ligaments are too severely damaged, the clavicle is surgically attached to the rib instead of the sternum. The joint will still probably be unstable, but the displaced clavicle no longer compresses the organs behind the sternum.

Once your physician's treatment is complete, the Physical Therapists at Healing Arts Center Physical Therapy have treatment options that will help speed your recovery, so that you can more quickly return to your active lifestyle.

## ***Growth Plate Injuries***

Injuries to the growth plate of the clavicle usually heal without treatment. The growth plate is a section of cartilage near the end of the clavicle where bone growth occurs. Only rare cases require surgery. In younger children, the growth of the bone will remodel the fractured bone. Remodeling actually causes the collarbone to straighten as the child grows. In young adults, there is less of this straightening effect because their bone growth is nearly complete.

## ***Osteoarthritis***

Osteoarthritis of the SC joint usually responds to our Physical Therapy treatments, including rest, ice, and anti-inflammatory medications. If the symptoms of osteoarthritis do not respond to basic treatment over six to 12 months, our Physical Therapist may refer you for surgical evaluation.

If you don't need surgery, our Physical Therapist will start you on range-of-motion exercises as pain eases, followed by a program of strengthening. At first, exercises are done with the arm below shoulder level. Your program will then advance to include strength exercises for the rotator cuff and shoulder blade muscles. Our goal is to get your shoulder moving smoothly.

Your Healing Arts Center Physical Therapy physical or occupational therapist will give you tips on controlling your symptoms, which may include using tape to help hold the SC joint in place. Although the time required for recovery varies, you will probably progress to a home program within four to six weeks.

## **Post-surgical Rehabilitation**

Your surgeon may have you wear a sling to support and protect the shoulder for a few days. Then your Physical Therapist can begin your rehabilitation program. Our first few Physical Therapy treatments will focus on controlling the pain and swelling from surgery. Ice and electrical stimulation treatments may help. We may also use massage and other types of hands-on treatments to ease muscle spasm and pain.

Physical Therapy can progress safely and quickly after a simple arthroscopic resection. Our treatments begin with range-of-motion exercises and gradually work into active stretching and strengthening. You need to avoid doing too much, too quickly.

Physical Therapy goes slower after surgeries that require a tissue graft. Your arm is usually placed in a sling to prevent shoulder movement for several weeks. After this time, our Physical Therapist will begin your rehabilitation with passive exercises. During passive exercises, the shoulder joint is moved, but your muscles stay relaxed. Our Physical Therapist gently moves your joint and gradually stretches your arm. You may be taught how to do passive exercises at home.

The active Physical Therapy phase of our treatment usually starts four to six weeks after graft surgery. Active range-of-motion exercises help you regain shoulder movement using your own muscle power. Our Physical Therapist might have you begin with light isometric strengthening exercises. These exercises work the muscles without straining the healing joint.

At about six weeks, we will have you begin more active strengthening. These exercises focus on improving strength and control of the rotator cuff muscles and the muscles around the shoulder blade.

Some of the exercises you'll do are designed to get your shoulder working in ways that are similar to your work tasks and sport activities. Our Physical Therapist will help you find ways to do your tasks that don't



put too much stress on your shoulder. Before your Physical Therapy sessions end, we will teach you a number of ways to avoid future problems.

At Healing Arts Center Physical Therapy, our goal is to help speed your recovery so that you can more quickly return to your everyday activities. When your recovery is well under way, regular visits to our office will end. Although we will continue to be a resource, you will be in charge of doing your exercises as part of an ongoing home program.

Healing Arts Center Physical Therapy provides services for Physical Therapy in Branson.

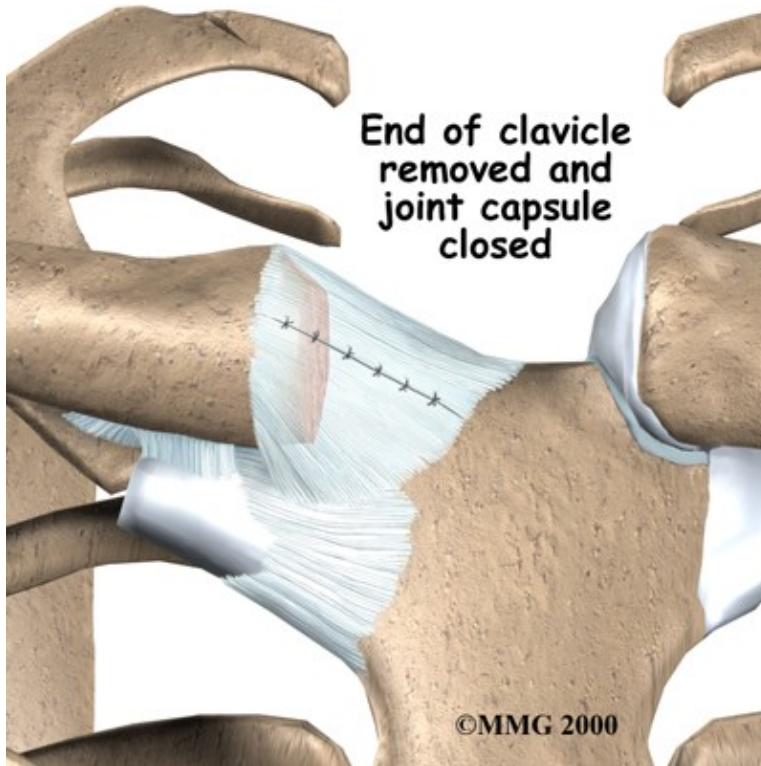
## **Surgery**

If nonsurgical measures fail to relieve your pain, you may need surgery.

## **Resection Arthroplasty**

The most common procedure for SC joint osteoarthritis is resection arthroplasty. A resection arthroplasty involves removing the surface of the clavicle next to the sternum. This keeps the arthritic bone surfaces from rubbing on one another. The remaining end of the clavicle eventually attaches to the rib with scar tissue. This stops the end of the clavicle from moving around when you move your arm.

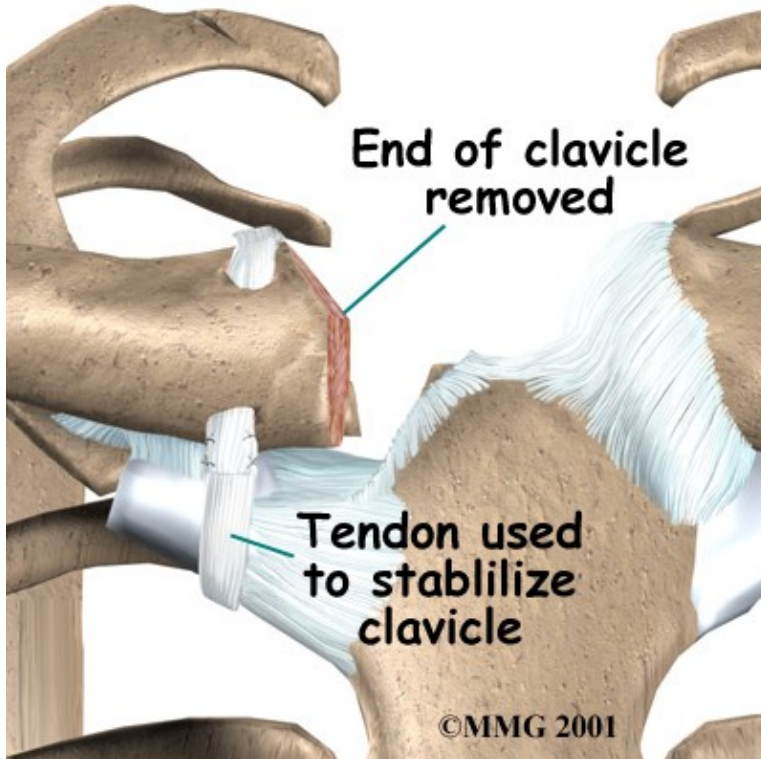
## **Resection Arthroplasty**



## Graft Method

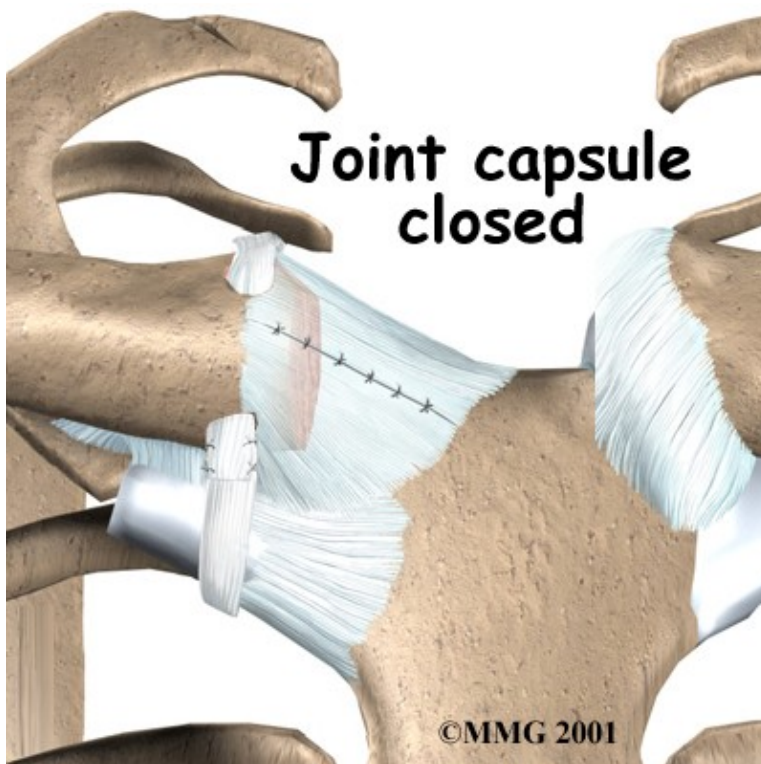
Your surgeon will try to keep from disturbing the ligaments around the SC joint. But if the ligaments are damaged and loose, a:

### Tendon Graft



may be used to tighten the connection between the end of the clavicle and the first rib. Surgeons use a piece of tendon taken from the wrist or a piece of fascia taken from the thigh. These are referred to as *tendon grafts* or *fascia grafts*. The graft is then:

### Sewn



through the end of clavicle and connected to the first rib.

Surgeons prefer not to use metal pins or wire to fix an unstable SC joint. These implants could puncture the vital organs behind the SC joint.

Portions of this document copyright MMG, LLC.